

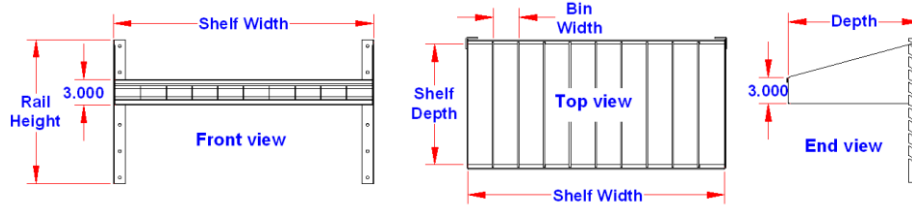
SU1 Series = Steel Shelf with Dividers.

SU1 series shelves are heavy duty and mounted inside box to store and organize your tools or parts. Shelves are adjustable up and down and the divider are removable. Shelves can be ordered in any size to fit any box. All AMERICAN TRUCKBOXES shelf kits are designed and built to keep your tools organized.

Description

- 16 & 18 gauge steel powder coated

Part Number	Application	Bolt Size	Weight Specs	Load Rating
SU1-	Rack Bolt-In	5/16"	N/A	N/A



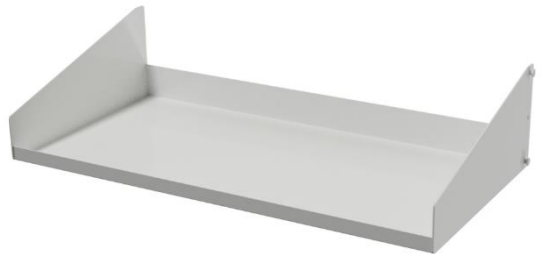
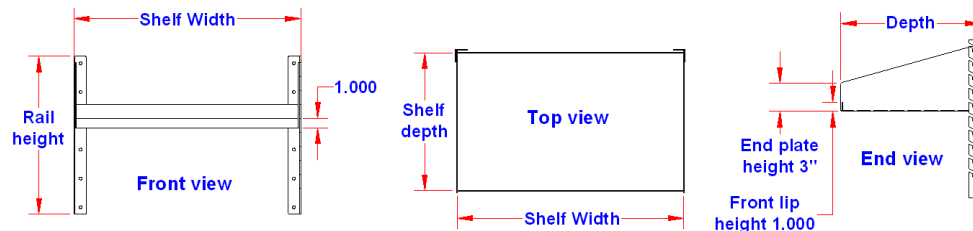
SF2 Series = Steel Shelf

SF2 series shelves are heavy duty and mounted inside box to store and organize your tools or parts. Shelves can be ordered in any size to fit any box. All AMERICAN TRUCKBOXES shelf kits are designed and built to keep your tools organized.

Description

- 14 gauge steel powder coated

Part Number	Application	Bolt Size	Weight Per Set	Load Rating
SF2-	Rack Bolt-In	5/16"	N/A	N/A



TO Series = Steel Tool Organizers.

TO series tool organizers are heavy duty and are inserted inside tool box to store and organize your tools. Tool organizers are removable. Tool organizers can be ordered in different size to fit most boxes. All AMERICAN TRUCKBOXES tool organizers are designed and built to keep your tools organized.

Description

- 18 gauge steel powder coated
- Optional rubber floor pads (use MTOP-1)

Part Number	Application	Wrench Set	Drawer - Shelf	Height (in.)	Depth (in.)	Width (in.)
1SWH51-14R	Wrench Hanger	3/8 - 1-1/4	-	1-3/4	1-1/16	18-1/2
2TSH010-SN	Socket Holder Set	1/4, 3/8 & 1/2	-	-	-	-
MTOP-1	Rubber Bumper Pads	6-Pads	-	-	-	-
STO31-141620-R	Fixed Tool Organizer	3/8 - 15/16	N/A	14	16	20
STO31-141626-R	Fixed Tool Organizer	3/8 - 15/16	N/A	14	16	26
STO31-162120-R	Fixed Tool Organizer	3/8 - 1-1/6	N/A	16	21	20
STO32-101420-R1	Drawer Tool Organizer	1/4 - 1-1/4	1-1	9.5	14	20
STO32-141620-R2	Drawer Tool Organizer	1/4 - 1-1/4	2-1	14	16	20
STO32-141626-R2	Drawer Tool Organizer	1/4 - 1-1/4	2-1	14	16	26



Wrench Hanger



STO31-141620-R



MTOP-1



STO32-101420-R1



Socket Holder