

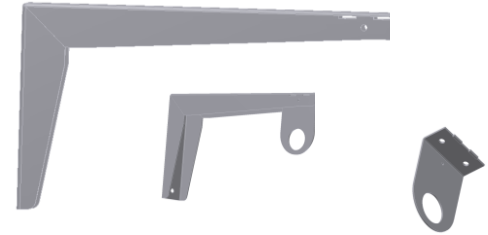
SSB4 & SSB5 - Shelf Wall Bracket - Steel

Shelf brackets are heavy duty and offer a great way to store and organize your equipment or part. Shelves can be mounted on walls in building or in trailers. Shelf brackets are available in different sizes, and can be ordered in custom size. All Dakota Plains Fabrication shelf brackets are designed and built to keep your equipment organized.

Description

- An engineered steel 14-gauge construction
- Powder coated baked-on finish
- Fully seam welded on both corners

Model Number	Description	Height (in.)	Depth (in.)	Gauge (Steel)	Weight (lb.)
SSB4-0611-W	Shelf Arm	6	11	14	1.50
SSB4-0713-W	Shelf Arm	7	13	14	1.75
SSB4-0815-W	Shelf Arm	8	15	14	2.01
SSB4-1017-W	Shelf Arm	10	17	14	2.36
SSB4-1219-W	Shelf Arm	12	19	14	2.71
SSB5-1423-W	Shelf Arm	14	23	12	3.10
SSB4-0325-W	Pipe Hanger	3	2.5	14	.273



Note: For Black add a "B" to the end of the model number, "W" is for White.

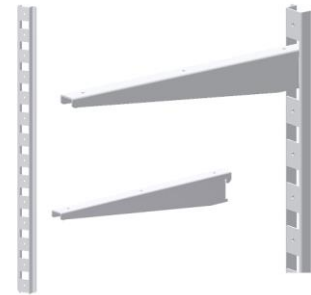
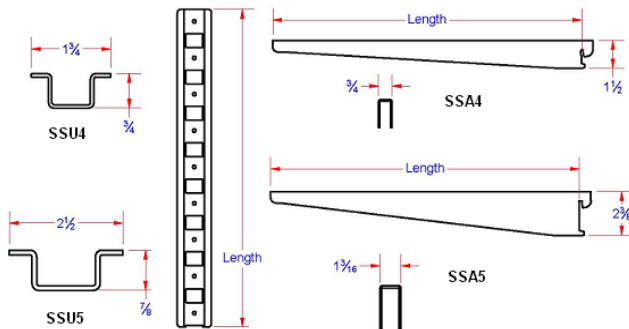
SSA & SSU - Shelf Wall Bracket - Steel

Shelf brackets are heavy duty and offer a great way to store and organize your equipment or part. Shelves can be mounted on walls in building or in trailers. Shelf brackets are available in different sizes, and can be ordered in custom size. All Dakota Plains Fabrication Shelf brackets are designed and built to keep your equipment organized.

Description

- An engineered steel 14 & 12 gauge construction
- Powder coated baked-on finish

Note: Weight rating based on 16" shelf with 2 brackets attached to standards mounted on 16" centers in 2x4 wood studs.



14 Gauge Shelf Brackets- Rated 400 Lbs

No.	Model No.	Length (in.)	Weight (lb.)	No.	Model No.	Length (in.)	Weight (lb.)	No.	Model No.	Length (in.)	Weight (lb.)
1.	SSA4-10A-W	9	0.9	2.	SSA4-12A-W	11	1.1	3.	SSA4-14A-W	13	1.4
4.	SSA4-16A-W	15	1.7	5.	SSA4-18A-W	17	2.0	6.	SSA4-20A-W	19	2.2
7.	SSU4-24A-W	24	1.7	8.	SSU4-30A-W	30	2.2	9.	SSU4-36A-W	36	2.6
10.	SSU4-42A-W	42	3.0	11.	SSU4-48A-W	48	3.5	12.	SSU4-60A-W	60	4.4
13.	SSU4-72A-W	72	5.2	14.	SSU4-84A-W	84	6.1	15.	SSU4-96A-W	96	7.0
16.	SSU4-120A-W	120	8.7	17.	SSU4-144A-W	144	10.4	18.			

12 Gauge Shelf Brackets-Rated 500 Lbs

19.	SSA5-12A-W	11	2.2	20.	SSA5-14A-W	13	2.6	21.	SSA5-16A-W	15	3.0
22.	SSA5-18A-W	17	3.4	23.	SSA5-20A-W	19	3.9	24.	SSA5-24A-W	23	5.1
25.	SSU5-24A-W	24	3.1	26.	SSU5-30A-W	30	3.8	27.	SSU5-36A-W	36	4.6
28.	SSU5-42A-W	42	5.3	29.	SSU5-48A-W	48	6.1	30.	SSU5-60A-W	60	7.6
31.	SSU5-72A-W	72	9.1	32.	SSU5-84A-W	84	10.7	33.	SSU5-96A-W	96	12.2
34.	SSU5-120A-W	120	15.2	35.	SSU5-144A-W	144	18.3	36.			