

HG – High Gullwing Cross Boxes - (High Profile) Aluminum & Steel - Double Lids

High gullwing cross boxes are heavy duty, high capacity, high profile and offer easy access from side of your truck. Boxes are mounted behind cab. These boxes are perfect for storing your equipment, tools and personal gear. Cross boxes are available in different sizes, and can be ordered custom size. All AMERICAN TRUCKBOXES boxes are designed and built to keep your equipment safe and secure.

Description

- An engineered aluminum or steel construction
- Fully seam welded on all seams and corners
- Stainless steel continuous hinge full length of door
- Channel braced reinforced lid & reinforced bottom plate
- Zinc epoxy primer with MR powder baked topcoat finish
- Gas springs to “pop” and keep lid open
- Push-in lockable stainless-steel latches with adjustable lock striker
- Professional sliding large tray with adjustable dividers
- Fully concealed rain gutter, with automotive type weather seal.
- Automotive style latch with smooth rotary action
- Mounting kit included – M3500R



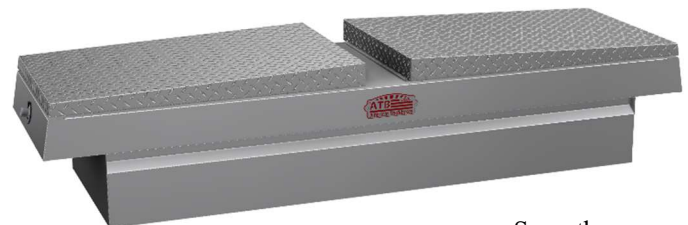
Diamond Tread



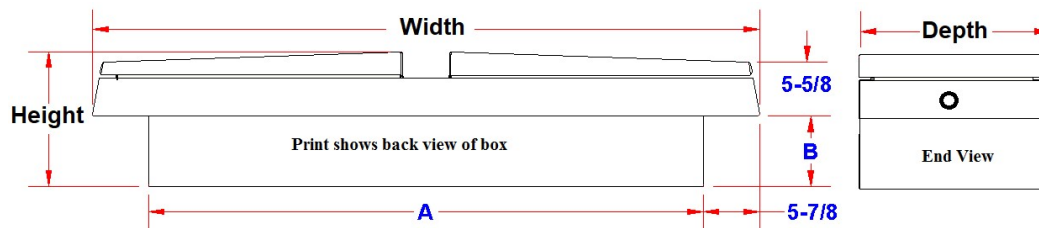
Pro-Sliding Tray



Steel



Smooth



No.	Model Number	Material	Height (in.)	Depth (in.)	Width (in.)	Dim. A (in.)	Dim. B (in.)	Weight (lb.)
1.	A-HG3-162062-TT	.063/.100 TP	16	20	62	50-1/8	9-1/2	72
2.	A-HG3-162072-TT	.063/.100 TP	16	20	72	60-1/8	9-1/2	78
3.	A-HG4-162072-TT	.100 TP	16	20	72	60-1/4	9-1/2	92
4.	A-HG4-162472-TT	.100 TP	16	24	72	60-1/4	9-1/2	104
5.	A-HG4-162872-TT	.100 TP	16	28	72	60-1/4	9-1/2	114
6.	A-HG4-182472-TT	.100 TP	18	24	72	60-1/4	11-1/2	106
7.	A-HG4-162072-T	.090 Smooth/.100 Tread	16	20	72	60-1/8	9-1/2	84
8.	A-HG4-162472-T	.090 Smooth/.100 Tread	16	24	72	60-1/8	9-1/2	94
9.	A-HG4-162872-T	.090 Smooth/.100 Tread	16	28	72	60-1/8	9-1/2	104
10.	A-HG4-182472-T	.090 Smooth/.100 Tread	18	24	72	60-1/8	11-1/2	98
11.	S-HG3-162062-*	16 Gauge Steel	16	20	62	50	9-1/2	134
12.	S-HG3-162072-*	16 Gauge Steel	16	20	72	60	9-1/2	158
13.	S-HG3-162472-*	16 Gauge Steel	16	24	72	60	9-1/2	175

Note: *Boxes are available in: Black (B) and White (W) Finish – add after part number.