

## DF – Drawer Fender Boxes - Steel or Aluminum

Drawer fender boxes are ultimate storage solution for your pickup truck under the tarp applications; heavy duty, high capacity and offer easy access to your equipment and tools. Boxes can be mounted in truck bed over the fenders. These boxes are perfect for storing your equipment, tools and personal gear. Drawer fender boxes are available in custom size. All AMERICAN TRUCKBOXES boxes are designed and built to keep your equipment safe and secure.

### Description

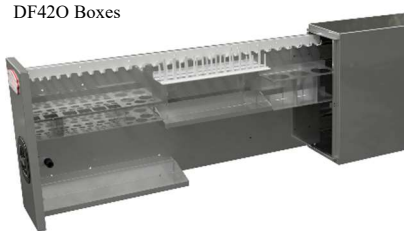
- An engineered aluminum & steel construction
- Optional - Powder coat finish steel boxes
- Stainless Steel hinge on full length of door/lid
- Lockable stainless-steel pull and/or DT-T-handle latch
- Automotive weather seal
- Fit under truck tonneau or box cover
- Pro-Tool organized on pull out drawer – DF-O Boxes
- Back compartment on longer boxes
- Heavy duty smooth action slides
- Mounting kit included - M3200D



DF--O Boxes come with single pullout tool organizer



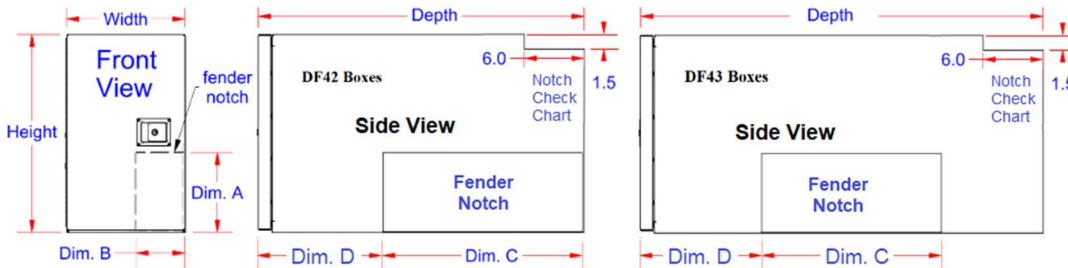
DF43 Boxes



DF42O Boxes



Note: \*Add L-Left (driver) or R-Right (passenger) Drawer configuration.



No.	Model Number	Material	Height (in.)	Depth (in.)	Width (in.)	Dim. D (in.)	Drawer/Depth	Back Compartment	Fits Box	Back Notch	Weight (lb.)
1.	A-DF410-19189*-S1	.90 Smooth	19	18	9	N/A	1 Side-W/Org.	N/A	6'	No	36
2.	A-DF410-19219*-S1	.90 Smooth	19	21	9	N/A	1 Side-W/Org.	N/A	6.5' - 8'	No	40
3.	A-DF420-19469*-S1	.90 Smooth	19	46	9	21	1 Side-W/Org.	N/A	6.5' - 8'	No	76
4.	A-DF430-19549*N-S1	.90 Smooth	19	54	9	21	1 Side-W/Org.	N/A	6.0'	Yes	84
5.	A-DF430-19649*N-S1	.90 Smooth	19	64	9	21	1 Side-W/Org.	N/A	6'	Yes	94
6.	A-DF430-19729*N-S1	.90 Smooth	19	72	9	21	1 Side-W/Org.	Yes/Top	6.5'	Yes	100
7.	A-DF430-19769*N-S1	.90 Smooth	19	76	9	21	1 Side-W/Org.	Yes/Top	6.5'	Yes	106
8.	A-DF430-196412*N-S1	.90 Smooth	19	64	12	21	1 Side-W/Org.	Yes/Top	6'	Yes	110
9.	A-DF430-197212*N-S1	.90 Smooth	19	72	12	21	1 Side-W/Org.	Yes/Top	6.5'	Yes	124
10.	A-DF41-191812*-S4	.90 Smooth	19	18	12	N/A	1-4=14"	N/A	6'	No	40
11.	A-DF41-192112*-S4	.90 Smooth	19	21	12	N/A	1-4=18"	N/A	6.5' - 8'	No	46
12.	A-DF42-194612*-S4	.90 Smooth	19	46	12	21	1-2=42" x 3-4=16"	Side	6.5' - 8'	No	122
13.	A-DF42-194612*-S4	.90 Smooth	19	46	12	21	1-2=42" x 3-4=16"	Side	6.5' - 8'	No	122
14.	A-DF43-197212*-S2	.90 Smooth	19	72	12	21	1=54" x 2=16"	Top/Side	6.5'	No	145
15.	A-DF43-197212*-S4	.90 Smooth	19	72	12	21	1-2=54" x 3-4=16"	Top/Side	6.5'	No	195
16.	A-DF43-197612*N-S2	.90 Smooth	19	76	12	21	1=60" x 2=16"	Top/Side	6.5'	Yes	198
17.	A-DF43-197612*N-S4	.90 Smooth	19	76	12	21	1-2=60" x 3-4=16"	Top/Side	6.5'	Yes	254
18.	S-DF31-191812*-4	16g Steel	19	18	12	N/A	1-4=14"	N/A	6'	No	52
19.	S-DF31-192112*-4	16g Steel	19	21	12	N/A	1-4=18"	N/A	6.5' - 8'	No	60
20.	S-DF32-194612*-4	16g Steel	19	46	12	21	1-2=42" x 3-4=16"	Side	6.5' - 8'	No	174
21.	S-DF33-197212*N-4	16g Steel	19	72	12	21	1-2=54" x 3-4=16"	Top/Side	6.5'	Yes	294