

**TY Series = Steel & Aluminum Trays for Cross & Side Boxes.**

Trays are Professional, HD and are installed inside cross, side or chest boxes. Trays offer a great way to store tools, parts or personal belongings. Trays come with adjustable dividers and partitions to organize your tools. All AMERICAN TRUCKBOXES tray are designed and built to keep your tools organized.

**Description**

• 16 gauge steel powder coated & .090 Aluminum construction

No.	Part Number	Height	Depth	Width	Weight	Load-R
<b>Fits Steel &amp; Aluminum Cross Boxes: LG-HG-HC-MC</b>						
1.	A-TY41-31725-20	3	17	25	10	75
2.	A-TY41-32125-24	3	21	25	12	75
3.	A-TY41-32525-28	3	25	25	14	75



TY41 Tray

Cross Box Tray

**Fits Steel & Aluminum Side Boxes: HS & LS**

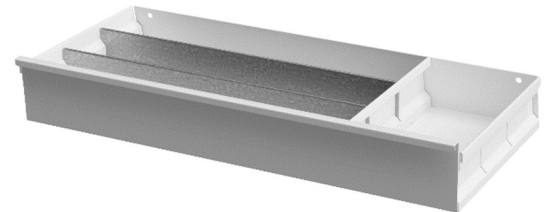
4.	S-TY32-3725-13	3	7	25	8	75
5.	S-TY32-31125-17	3	11	25	10	75

**Fits Top Chest Boxes: ATC41, ATC51, STC41 & STC51**

6.	S-TY35-3825-18	3	Varies	25	12	100
----	----------------	---	--------	----	----	-----

**Fits Top Chest (Offset) Boxes: TC52 & TC42**

7.	S-TY36-31225-18	3	Varies	25	9	100
----	-----------------	---	--------	----	---	-----



Side Box Tray

TY32 Tray



TY35 Tray



TY36 Tray